

APPENDIX A

SITE AREA
8397 SQM



Zvi Beking
architects
architects international pty ltd
acn 082 054 751
abn 65 062 054 751

54 glasshouse rd
collingwood vic 3066
ph 03 94 95 3863
fx 03 94 95 3947



602-630 Doncaster Road
21 September 2011

Plan
Basement Lower

TP
B1

SITE AREA
8397 SQM



ITN
 architects

Zvi Belling
 ornise zvi@itnarchitects.com
 81 architects international Pty Ltd
 acn 002 054 751
 abn 85 082 054 751

54 glasshouse rd
 collingwood VIC 3066
 ph 03 9416 3863
 fx 03 9416 3647



Plan
Basement Entry

TP
 B2

SITE AREA
8397 SQM



Zvi Beilng
 email: zvi@itnarchitects.com
 an architects and interior pty ltd
 acn 062 054 751
 abn 85 062 054 751

54 glasshouse rd
 corkwood vic 3066
 ph 03 94 16 3883
 fx 03 94 16 3947

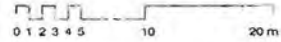
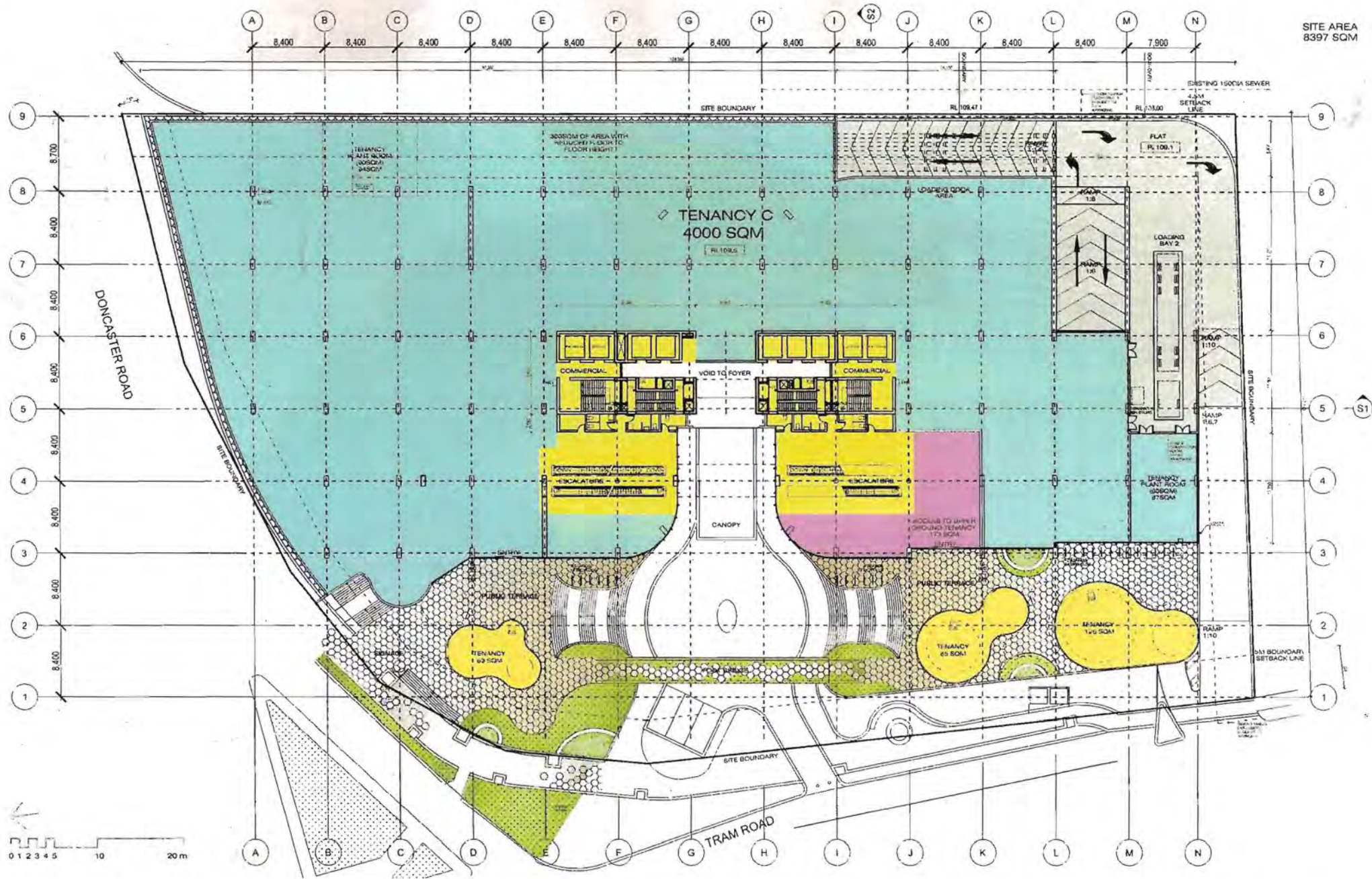
602-630 Doncaster Road
 21 September 2011



Plan
Lower Ground

TP
 B3

SITE AREA
8397 SQM



ITN
architects

Zvi Bellin
email: zvi@itnarchitects.com
en: architects international pty ltd
aan 082 054 751
jbn 05 082 054 751

54 glenside road
collingwood vic 3066
ph 03 9410 3063
fx 03 9410 3047

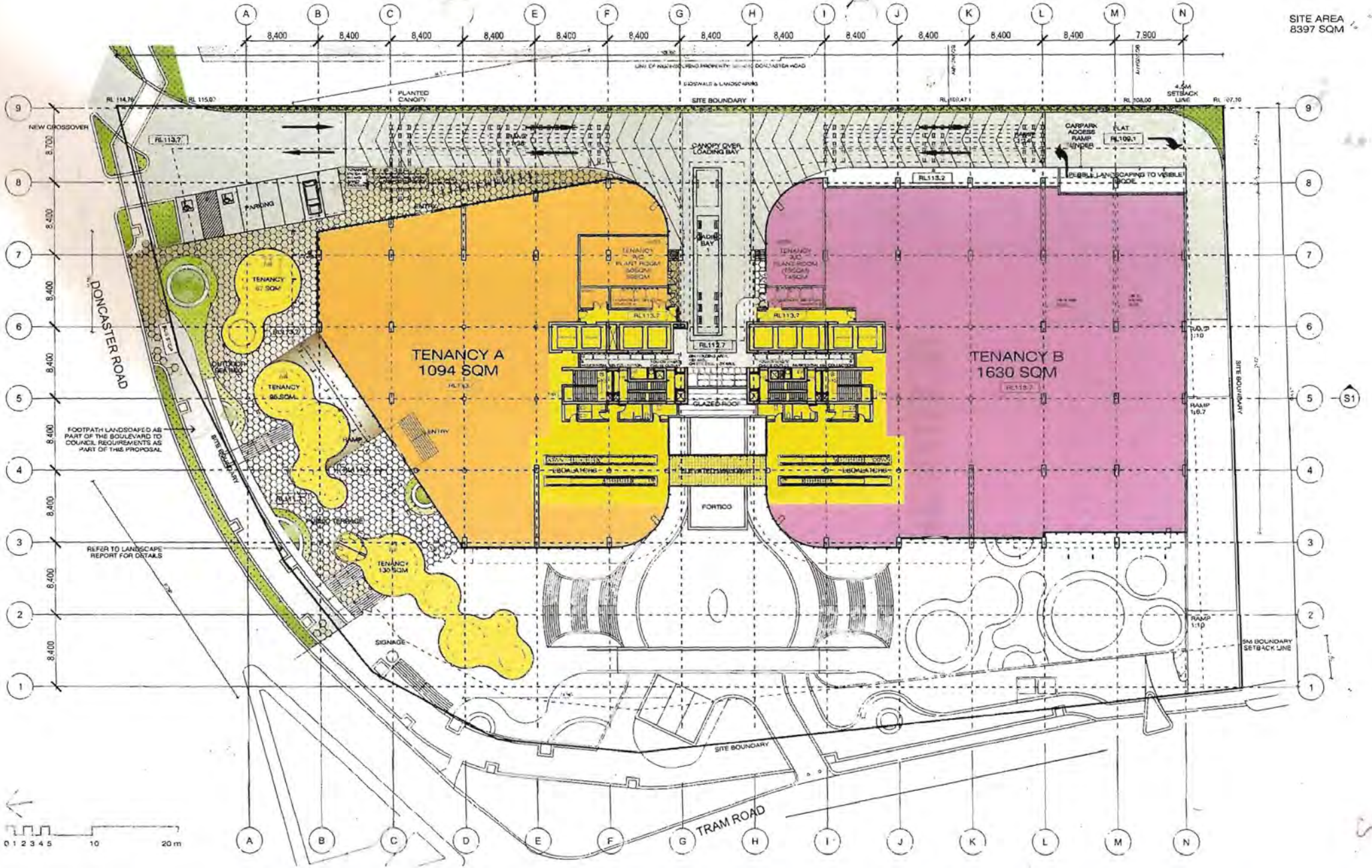


602-630 Doncaster Road
21 September 2011

Middle Ground

Plan
TP
B4

SITE AREA
8397 SQM



ITN
 Zvi Etkin
 54 glasshouse rd
 collingwood vic 3068
 ph 03 9416 3853
 fax 03 9416 3847

602-630 Doncaster Road
 21 September 2011

Plan
Upper Ground

TP
 B5